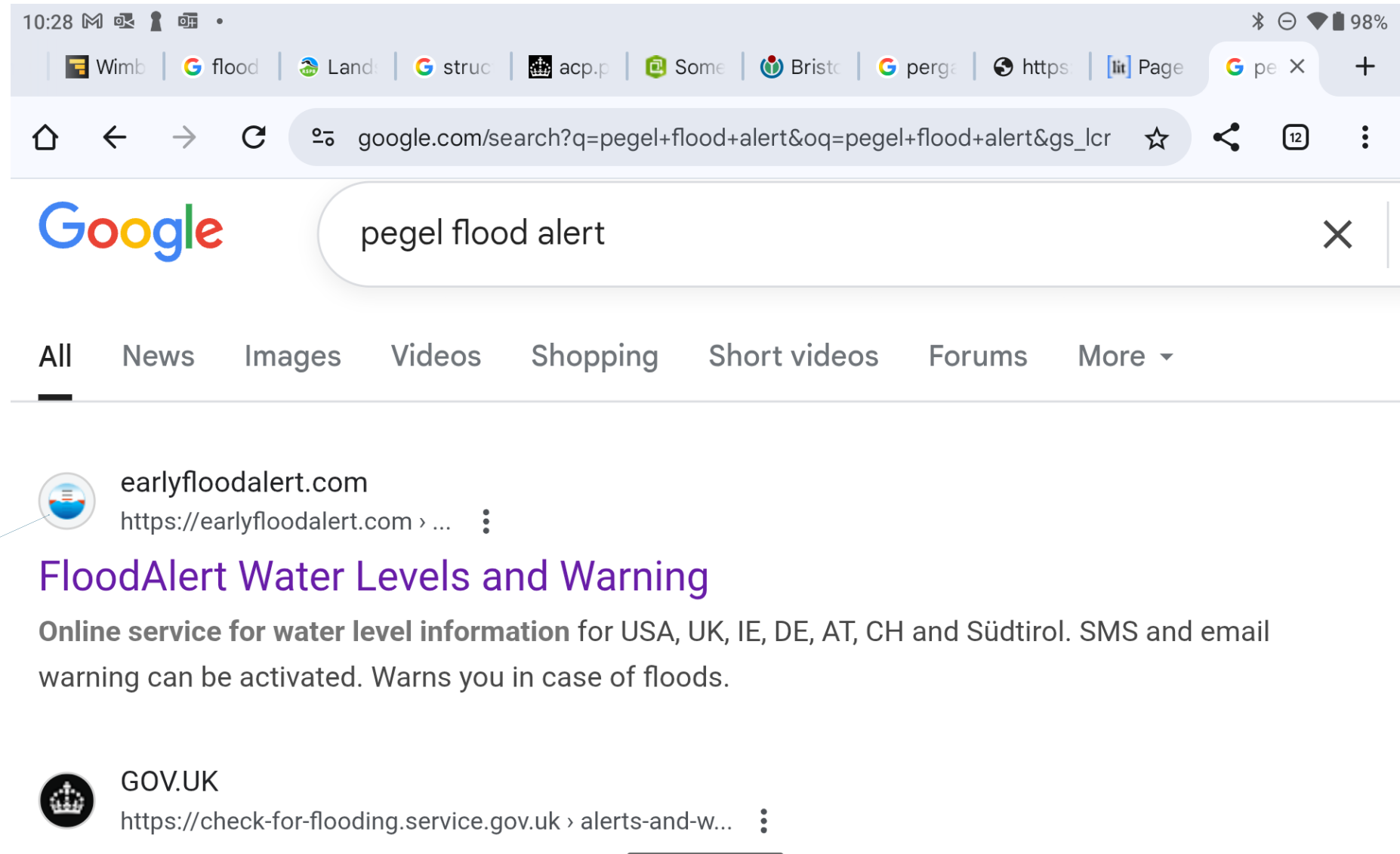


How to use the Pegel flood
alert APP by SOBOS.

Put into your
search engine

'Pegel flood
alert' on
Google



Highlight
this image



This is the page
that appears
when you
highlight the
pegel alarm on
Bing. Find
this app and
pick it

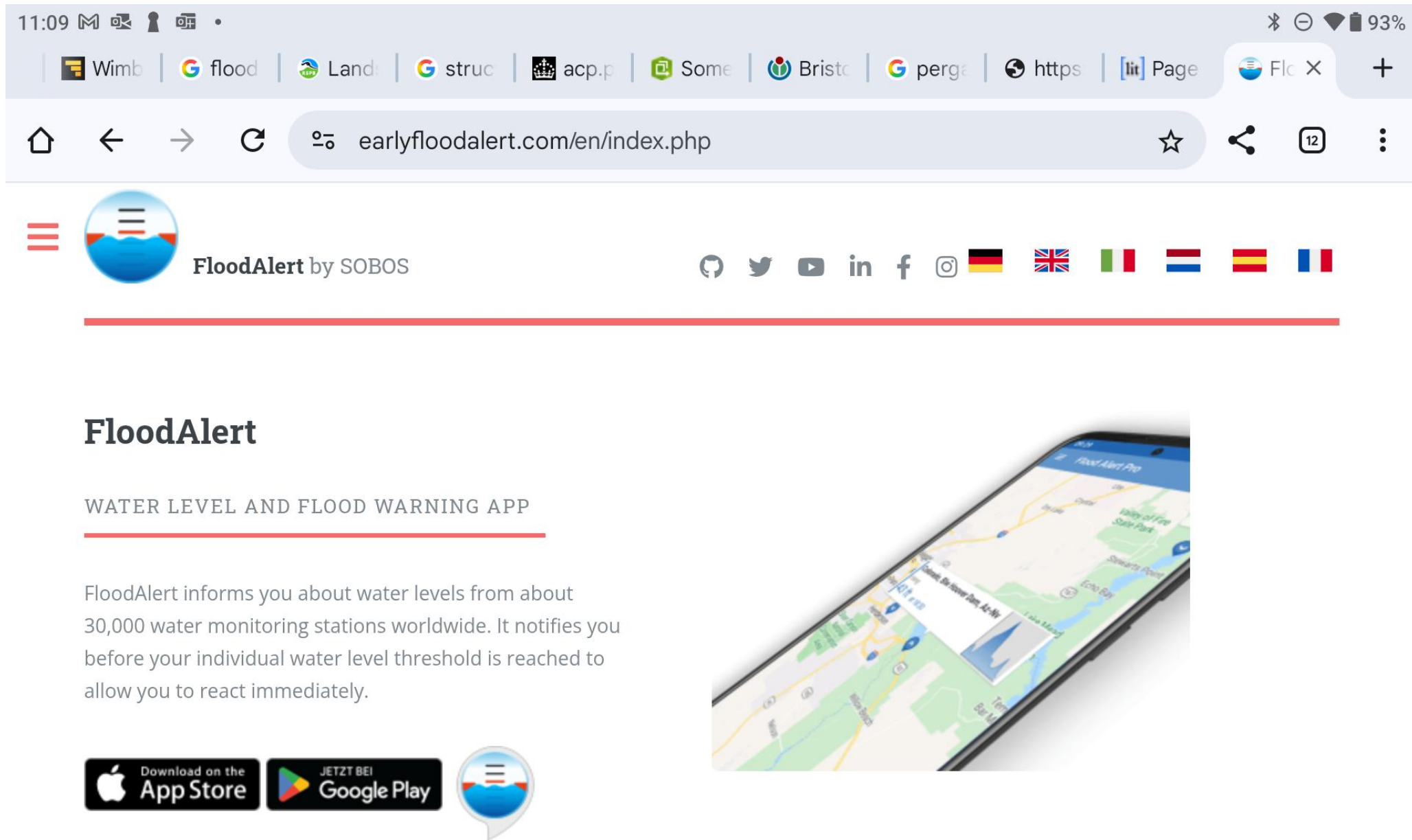
PegelAlarm

<https://earlyfloodalert.com> › en

FloodAlert Water Levels and
Warning - PegelAlarm

FloodAlert Water level and flood
warning app FloodAlert informs
you about water levels from ...

Load app by downloading from App store if you have an iphone or ipad, or from Google play if you are android.



11:09 M 93%

Wimb flood Land struc acp.p Some Bristc perga https Page Flc X +

earlyfloodalert.com/en/index.php

FloodAlert by SOBOS


FloodAlert

WATER LEVEL AND FLOOD WARNING APP

FloodAlert informs you about water levels from about 30,000 water monitoring stations worldwide. It notifies you before your individual water level threshold is reached to allow you to react immediately.

Download on the App Store

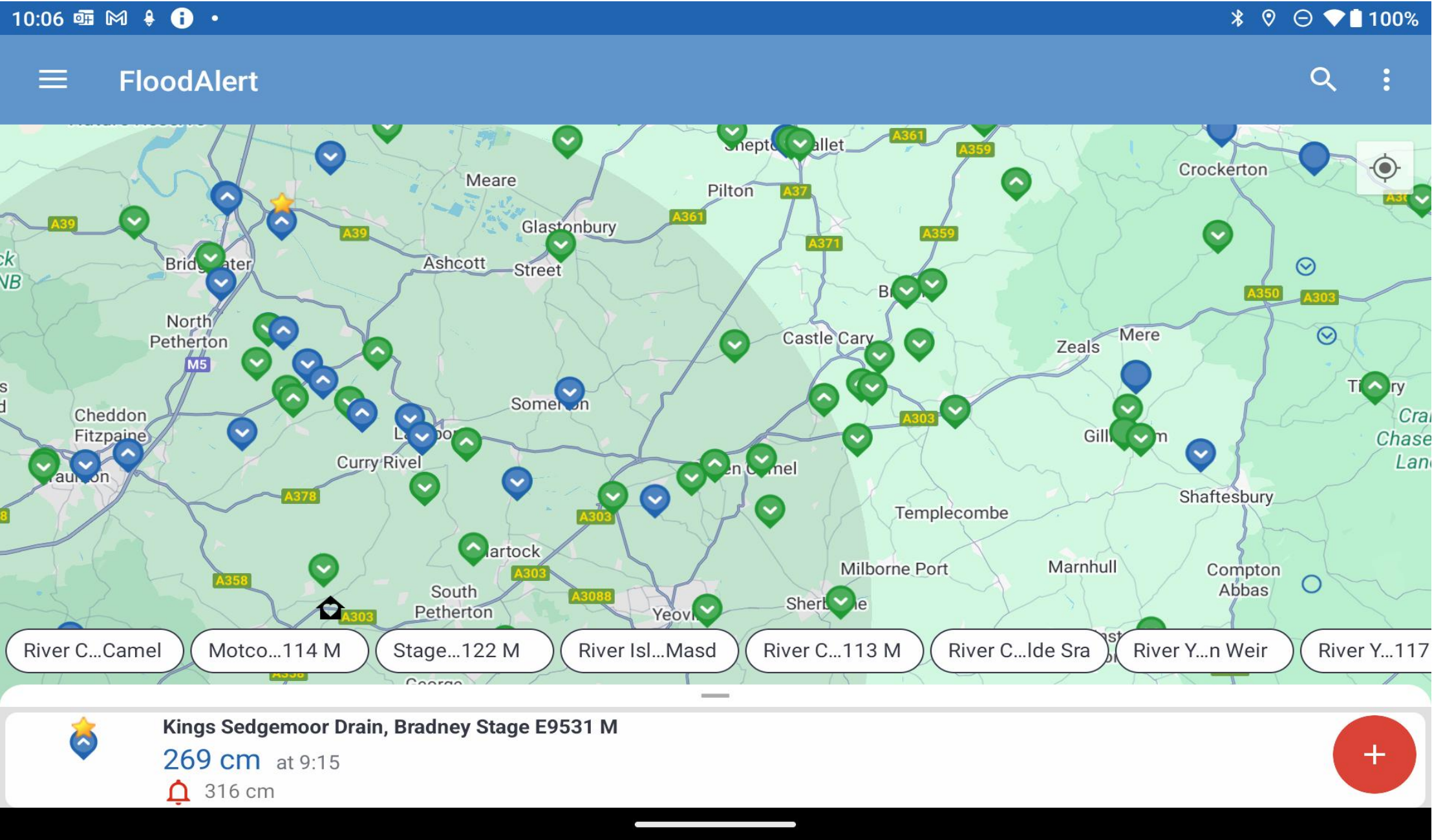
JETZT BEI Google Play



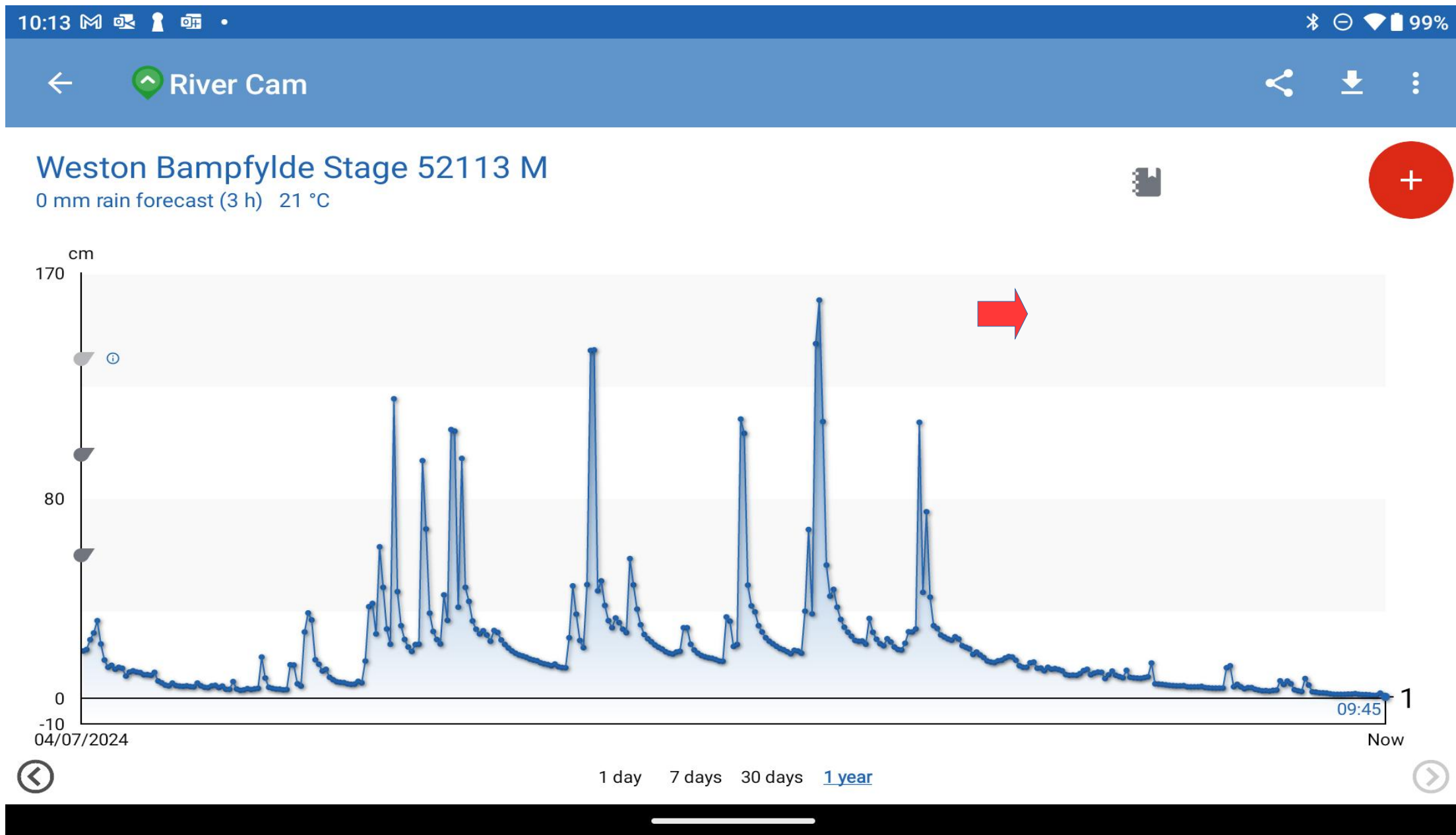
App will
show up
on screen
as
indicated
by the
white
arrow



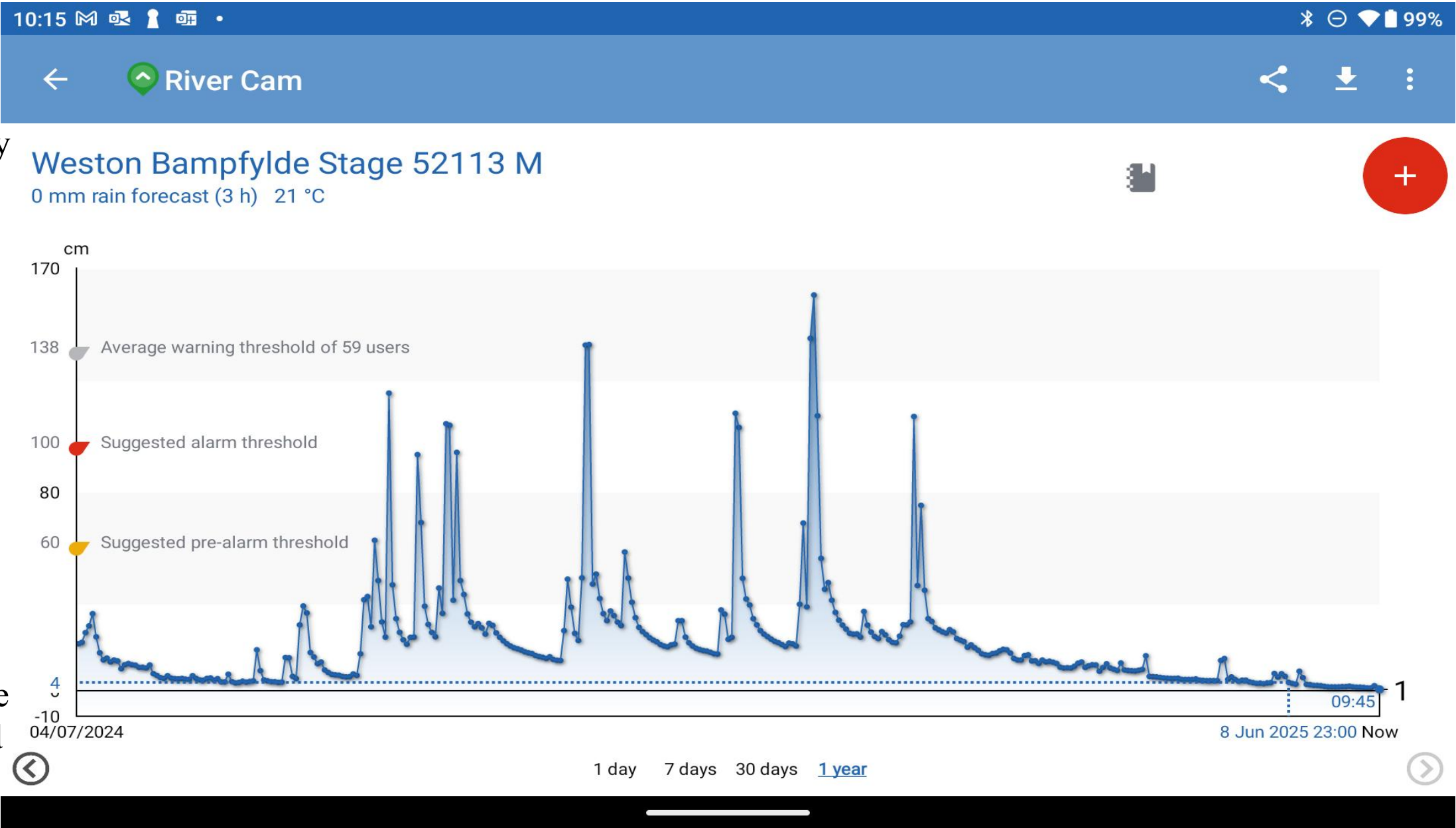
Highlight
arrow of
the gauge
that you
wish to
read



This is Western Bampfylde Near Sparkford showing the annual data. Highlight any blank part of the screen(as shown by the arrow) and a new screen appears.



You will notice that on the left hand vertical line three points have appeared. They are suggested levels are based on the annual river height. It has not flooded in the last 12 months. The average warning threshold is also low for flooding on the Cam. It should be at 2.5 m.



If you hit the red button on the top left of your screen this screen appears. You can have one free warning alarm. If you want more you can pay £17.49 per year for pegel alert pro giving you unlimited alerts. You can then set your own alert for your own level for your own phone or ipad. The alarm will then activate whenever the river reaches that level. The alarm is both audio and visual.

